

Description

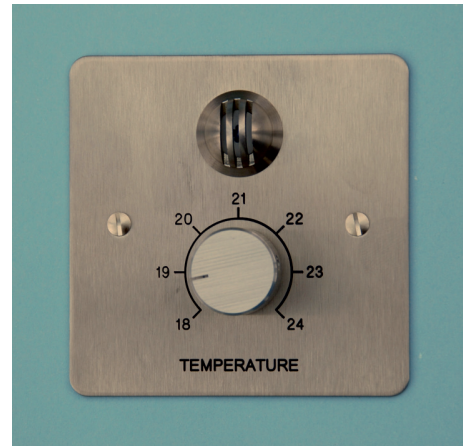
Stylish Thimble housing with slotted vents for airflow across the sensor - quicker response time. Fitted with a choice of Sensor and Potentiometer types to suit most BMS systems

Material

Aluminium, Brushed stainless steel, Polished stainless steel, Lacquered Brass, Powder coated in RAL colours. Any plated finish to match existing electrical hardware (See our leaflet for the range of finishes). Also available in any style to match existing Electrical switchplates (eg screwless etc)

Mounting

- Plate : 86mm x 86mm x 1.5mm thick flat plate (or style to match Electrical switchplates) fits standard flush single gang back box
- Sensor housing: 18mm diameter slotted housing in finish to match plate
- Sensing element: Choice of high quality NTC Thermistor, Platinum or Nickel sensors
- Potentiometer: Choice of Pot values, 2 wire, 3 wire, Knob in finish to match plate
- Engraving: Any engraving to suit your requirements (choose from examples or send a drawing)



Ordering information

TTS/S - 01 - 10 - 10 - 05

Finish	
Ref	Finish
01	Brushed Stainless steel
02	Polished Stainless steel
05	Lacquered Brass
07	Powder coated (state RAL colour)
XX	Match Electrical switchplates (state range and finish) eg Wandsworth Infinity Polished Nickel

Potentiometer Type	
Ref	Pot
01	0 - 10K ohms
02	0 - 10K ohms 3 wire
10	1 - 11K ohms
15	0 - 250 ohms
20	0 - 5K ohms
30	969 - 1219 ohms

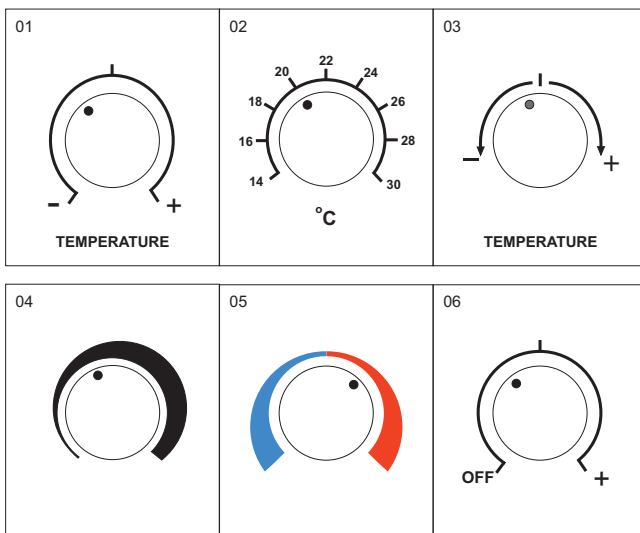
Sensor Type		
Ref	Sensor	System
01	1.8K3A1	TAC
04	3K3A1	Alerton
10	10K3A1	Trend, Honeywell, Next, Smart
12	10K4A1	Andover, Delta, york
15	20K6A1	Honeywell
20	50K6A1	Priva
30	SAT1	Satchwell
52	PT1000A	Cylon
60	LS Ni1000	Siemens
XX	Other	Specify when ordering

Engraving style	
Ref	Style
01	Std/TEMPERATURE
02	Scale (state range)
03	Arrows / TEMPERATURE
04	Black expanding
05	Red / Blue
06	Std with OFF (requires special Pot)
XX	Send drawing

Example:

TTS/S - 01 - 10 - 10 - 05
Brushed Stainless steel plate TREND sensor, 1 - 11K potentiometer, Red / Blue engraving

Bold = Standard item available from stock



Associated Products

- Button sensor / Setpoint
- Concealed sensor / Setpoint
- Discrete Temperature Sensors
- Button Temperature Sensors
- Thimble Temperature Sensors
- 0 - 10Vdc Setpoint